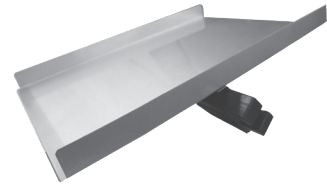
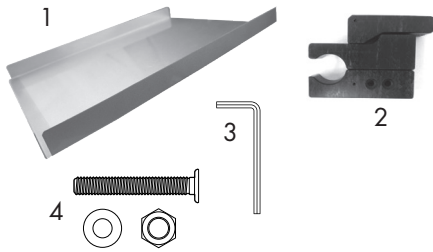


# EuroFit Side Attach Literature Holder

## Product Parts

- 1 - Literature Holder
- 2 - Clamp
- 3 - 4mm Hex Wrench
- 4 - Screw, nut, washer



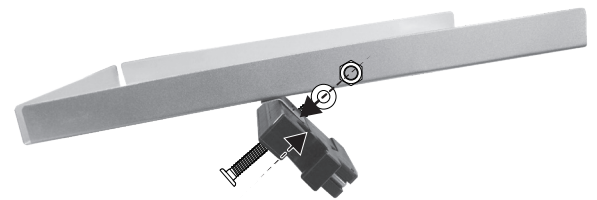
## Display Set-Up

### Step 1

Place on a clean flat surface. Verify you have all parts described above.

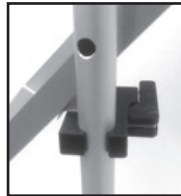
### Step 2

Attach Clamp (2) by inserting screws through Clamp (2) into and passing through holes in Literature Holder (1). Hand tighten the nuts. Finish tightening using supplied 4mm Hex Wrench (3).



### Step 3

Loosen Clamp (2) and place around existing frame. Tighten clamp to hold in place. Literature holder is designed to be used in the portrait position.



Open position / Closed position

Clamped to frame

## Storage

Store in a cool dry location.